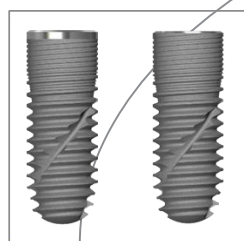
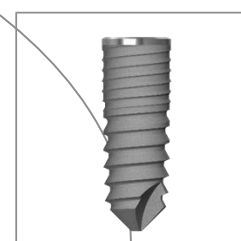


BEGO Implant Systems
Multi^{Plus} concept

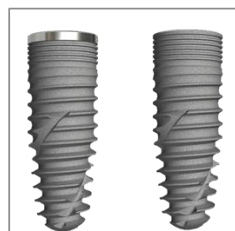
BEGO Semados[®] obitelj implantata



SC/SCX-Line
Cylindrical with
self-tapping
thread design
Platform Switch



RI-Line
Conical with
condensing
thread design
Platform
Switch



RS/RSX-Line
Conical with
self-tapping
thread design
Platform Switch

MultiPlus sistem



PS MultiPlus 0° (GH 1 or GH 3)



PS MultiPlus 20° (GH 2.3-0.6 or GH 4.0-2.3)



PS MultiPlus 30° (GH 4.0-1.5)



MultiPlus titanium abutment



MultiPlus Universal



MultiPlus MC

Multi^{Plus} system - komponente

Transfer za uzimanje otiska/laboratorijski analog



Multi^{Plus} zatvorena žlica
L8 / L12



Multi^{Plus} otvorena žlica
L8



Multi^{Plus} analog

Multi^{Plus} system - komponente

Scan abutment



CAD

- Dizajn se može napraviti sa **3shape** i/ili **exocad** software-om

3shape 

exocad

<http://www.bego.com/implantology-solutions/prosthetic/with-platform-switch-design-eg-rsr-sx-implants/cadcam-prostheses/>

3shape

BEGO Implant Systems_Multi+.dme

Exocad

BEGO Implant Systems_Multi+.zip

Multi^{Plus} sistem - komponente

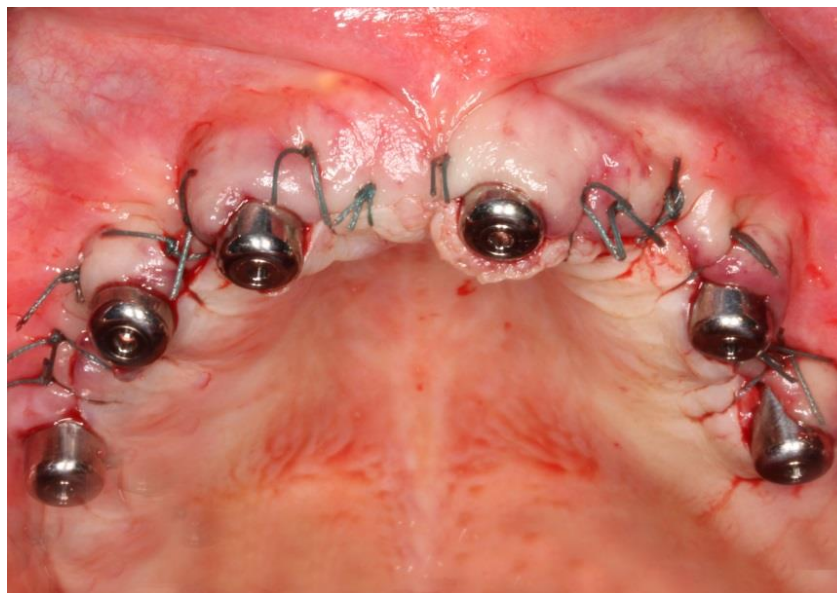
Gingiva former



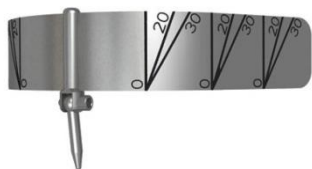
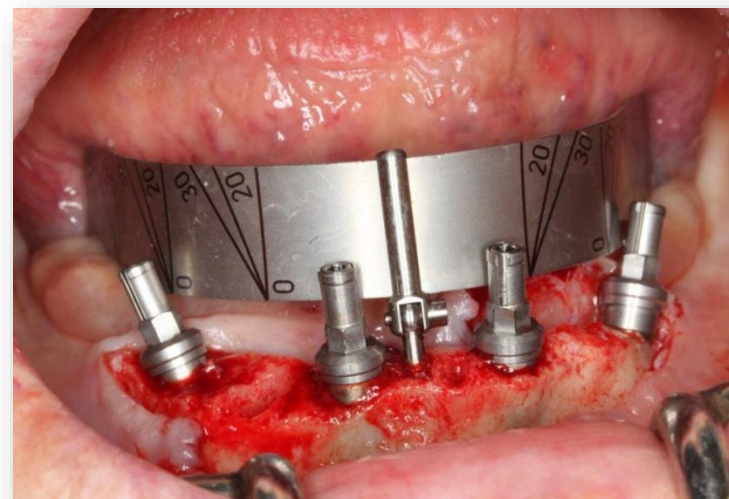
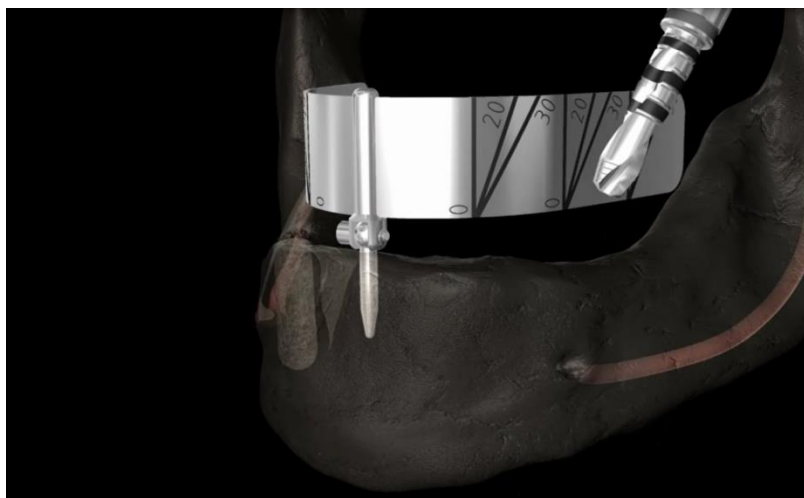
Multi^{Plus} gingiva former L5



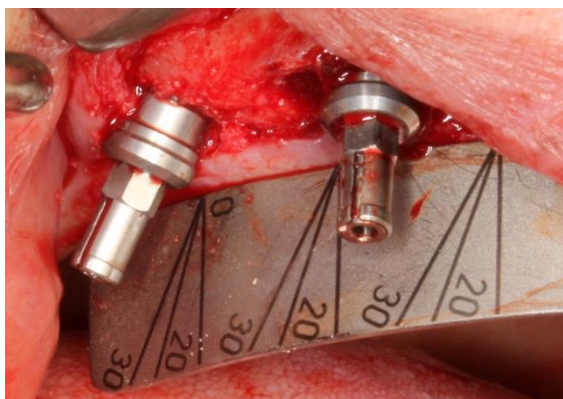
Multi^{Plus} gingiva former "GLJIVA" L5



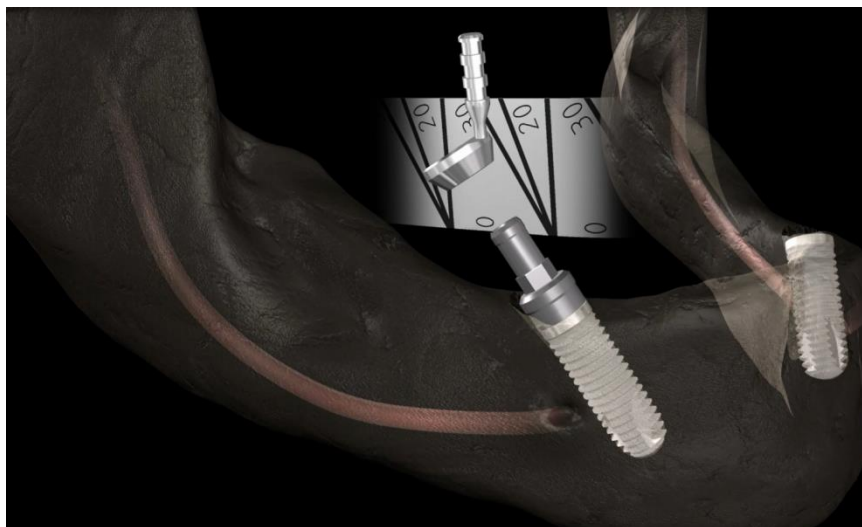
Specijalni alati



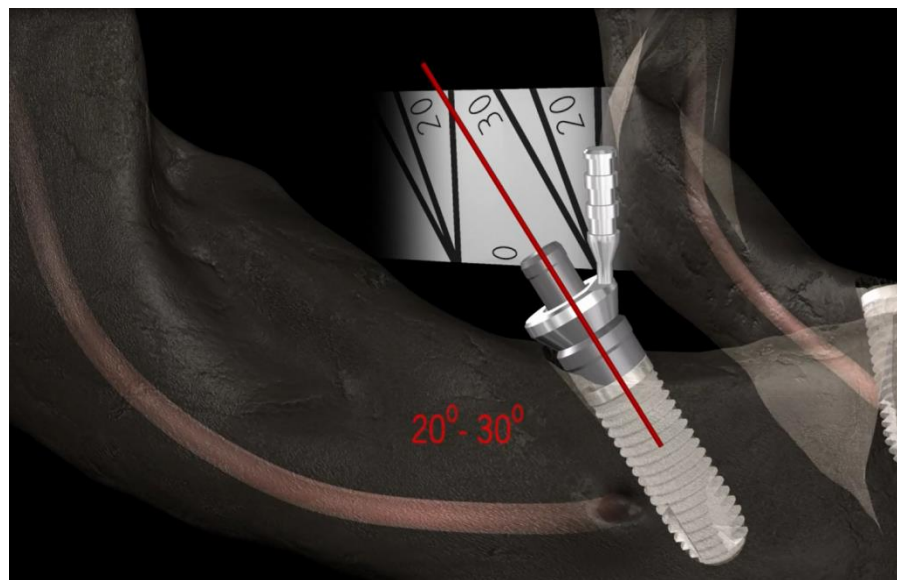
Multi^{Plus} kirurški splint



Special Tools

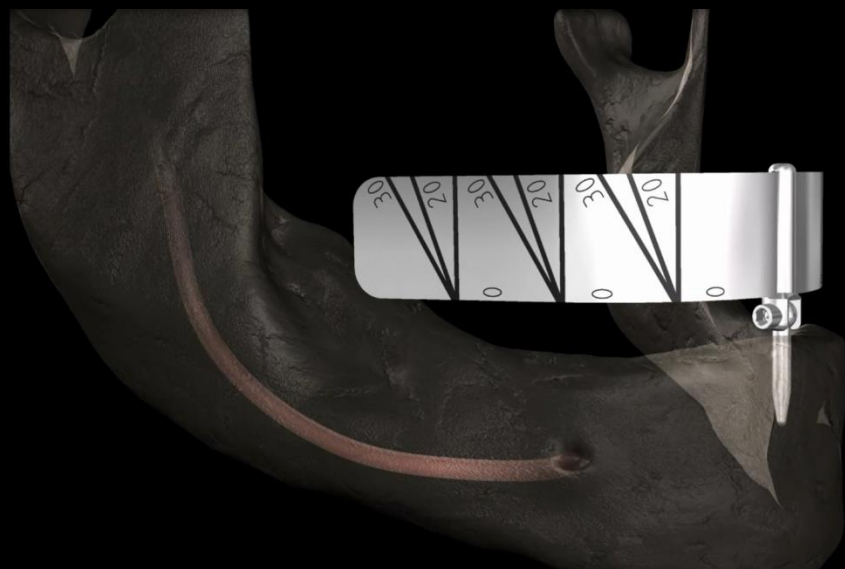


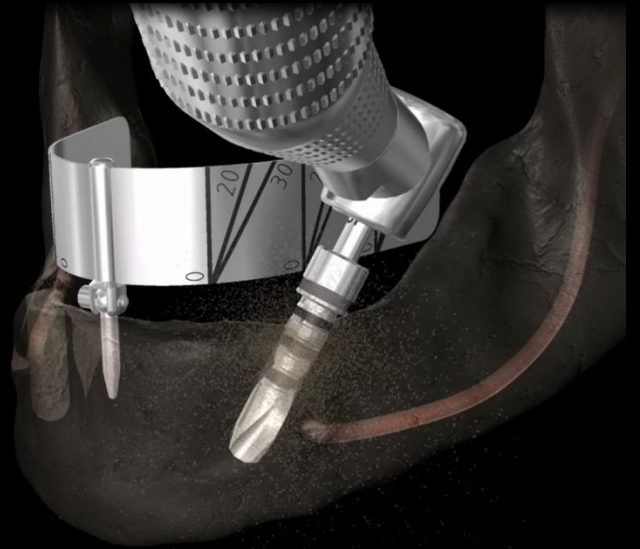
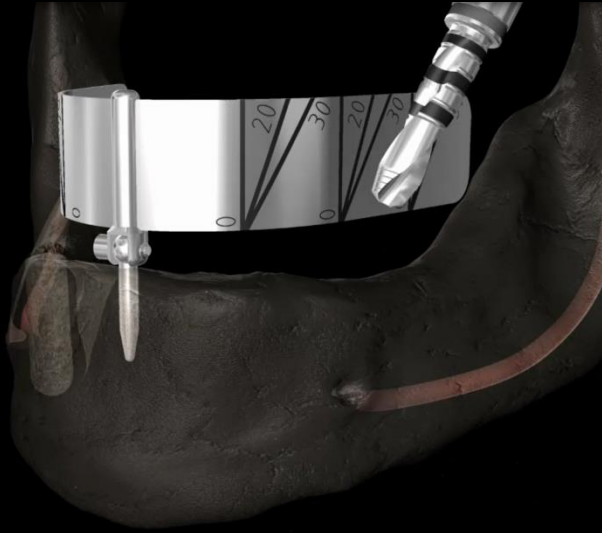
20 stupnjeva 30 stupnjeva
Multi^{Plus} "lulice" za izbor angulacije



Multi^{Plus} koncept

Kirurški protokol

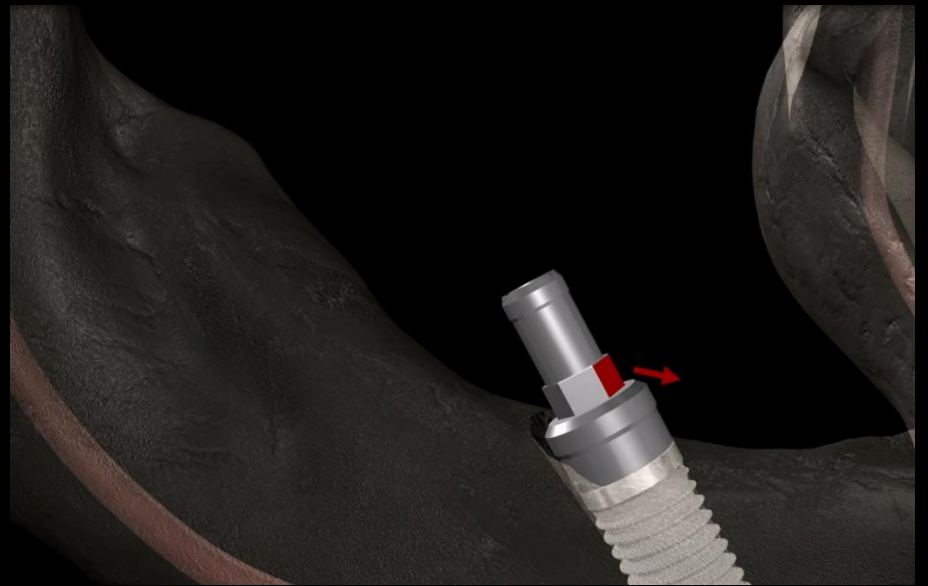
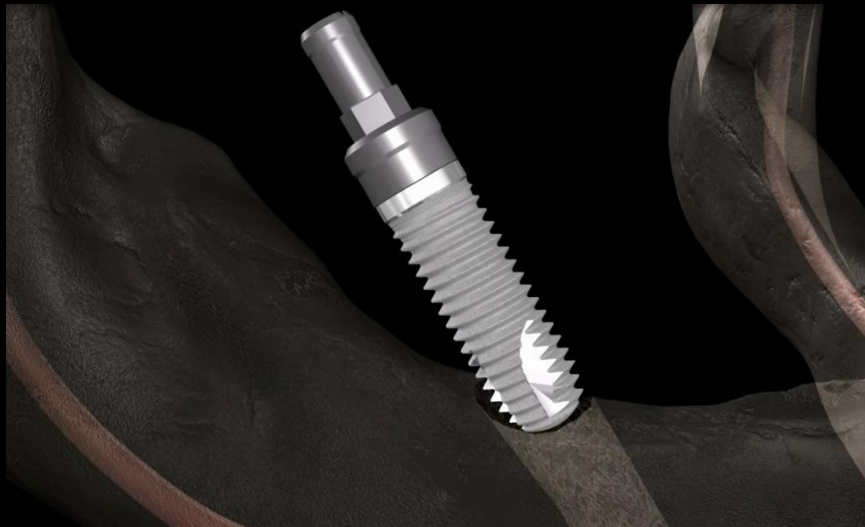




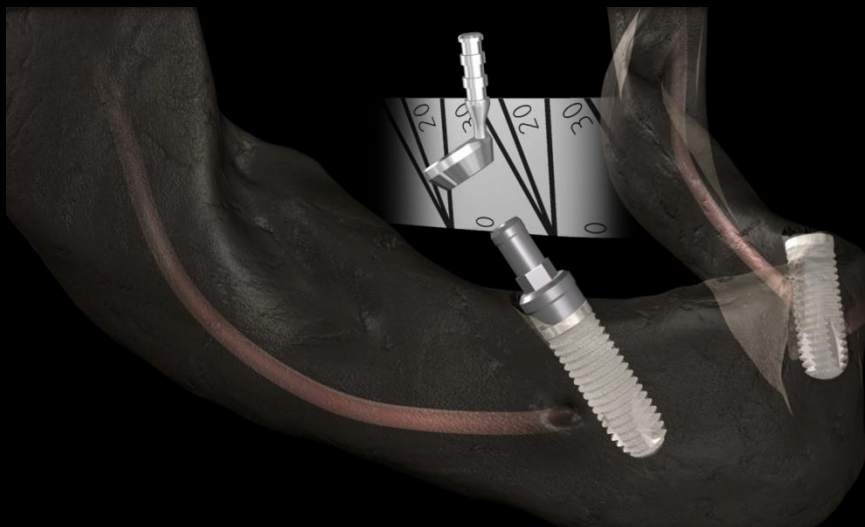








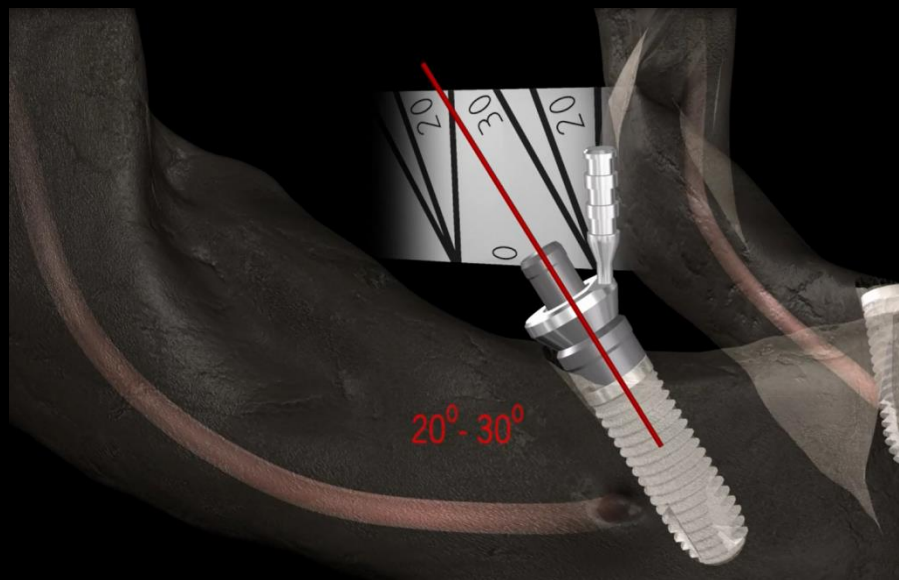
Multi^{Plus} alat za određivanje kuta abutmenta

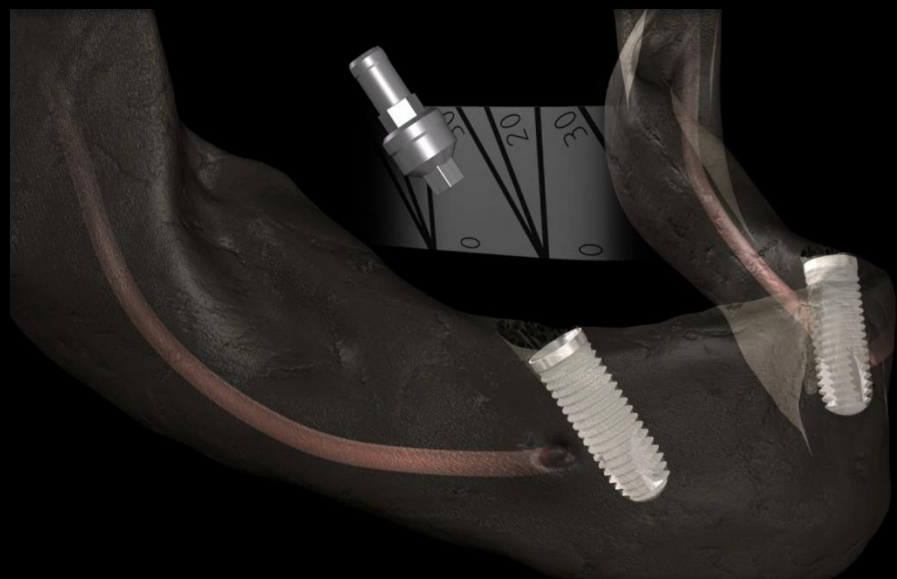
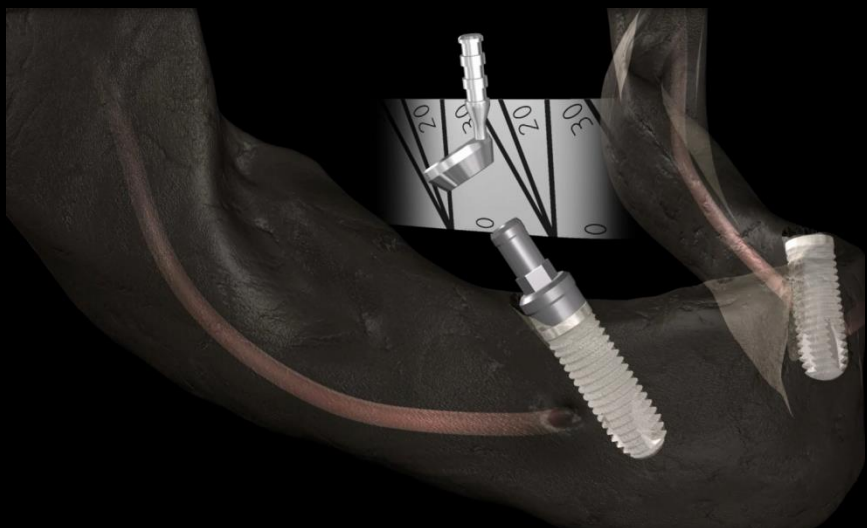


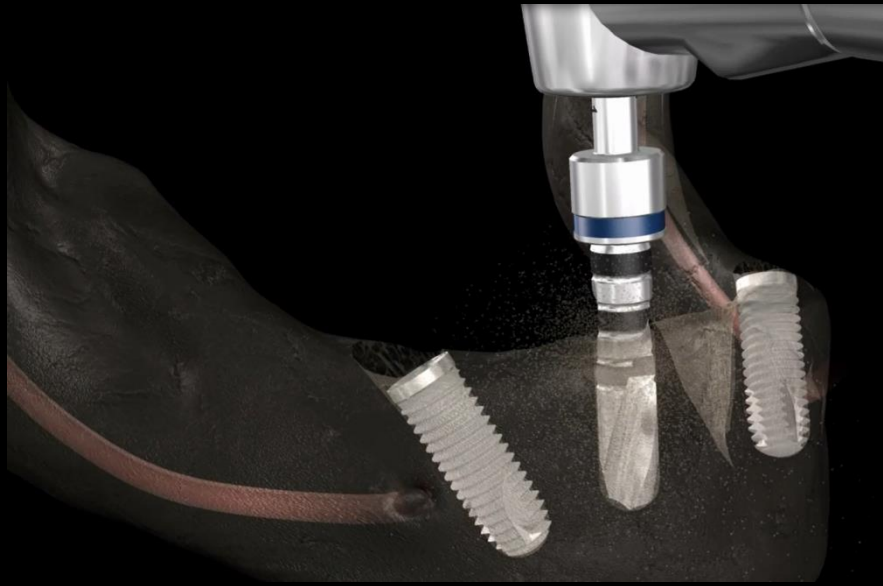
20 stupnjeva

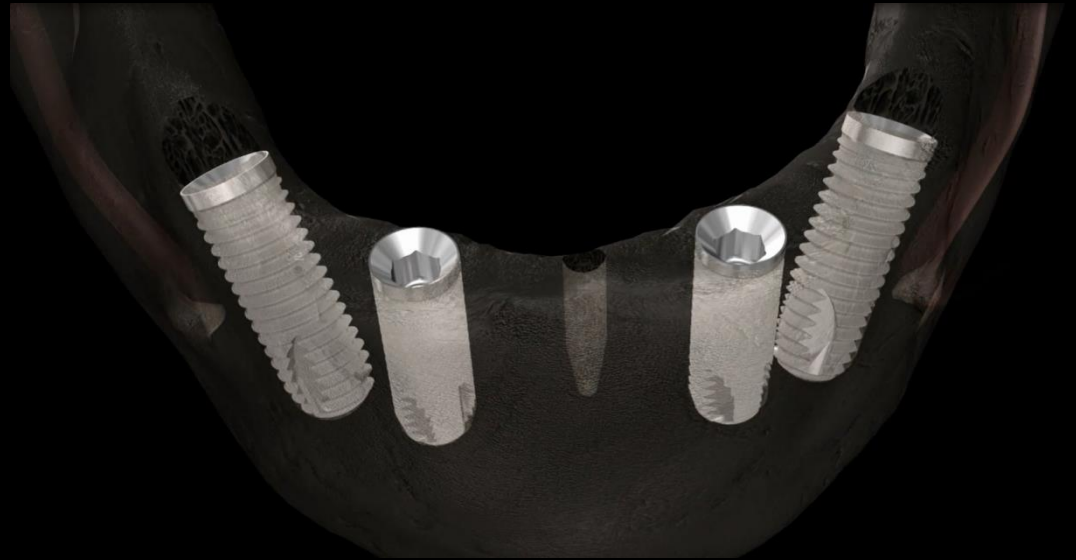
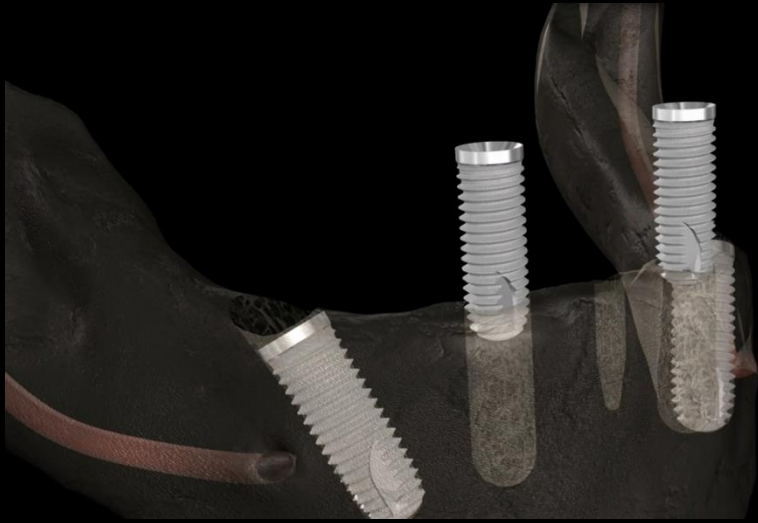


30 stupnjeva



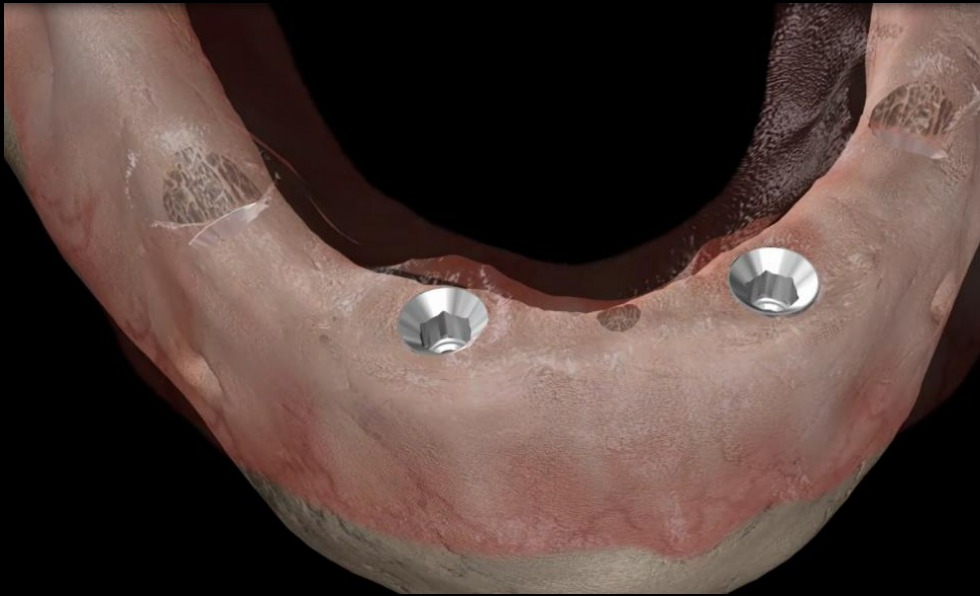


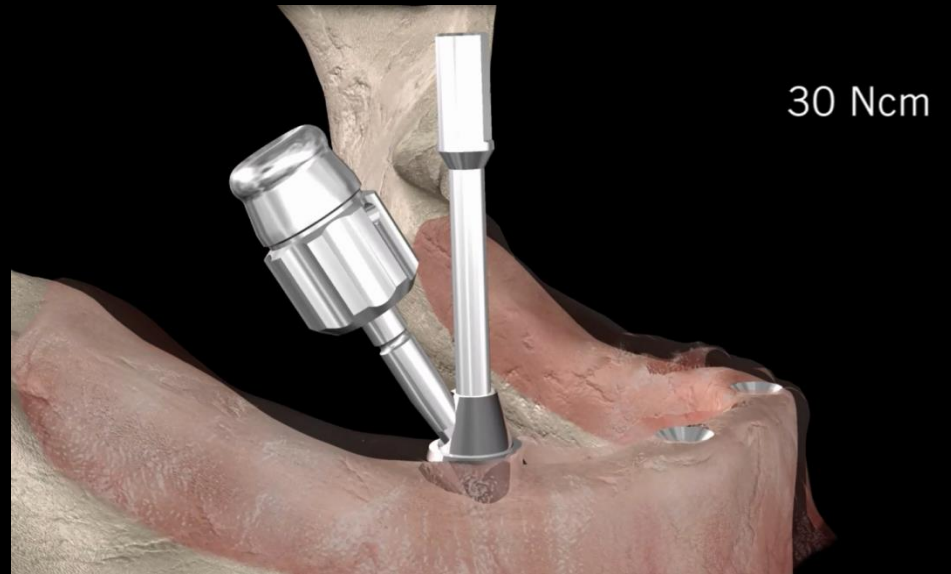
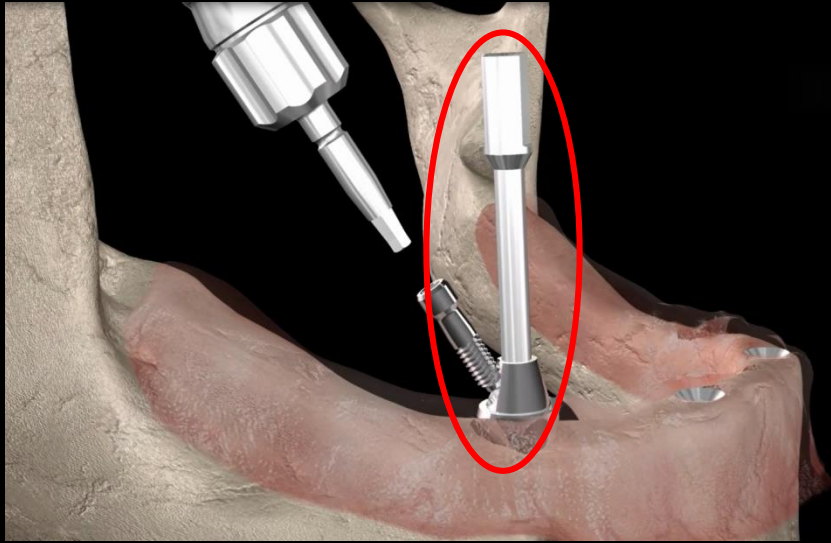


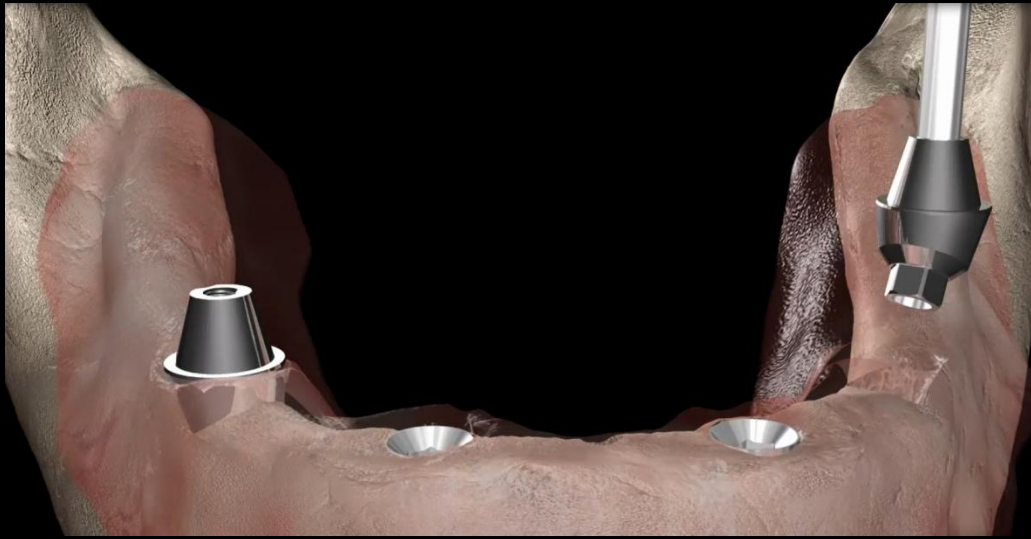


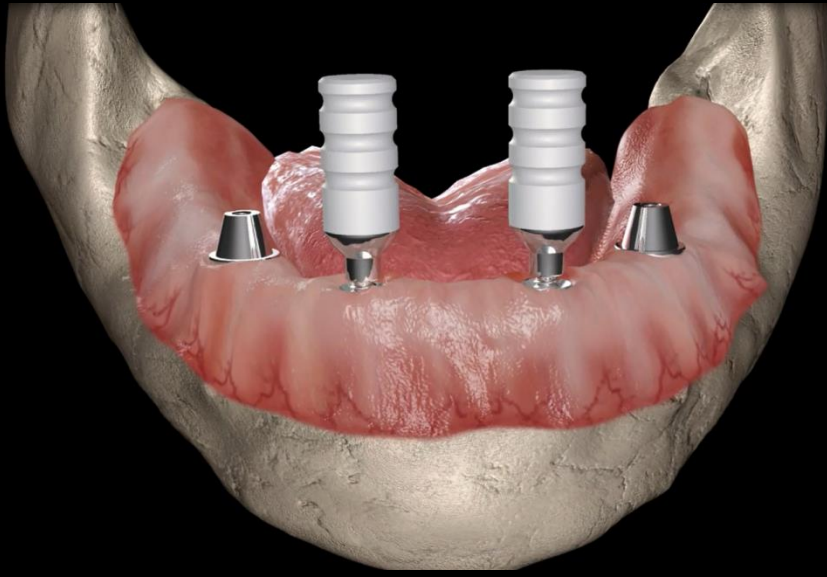
Multi^{Plus} koncept

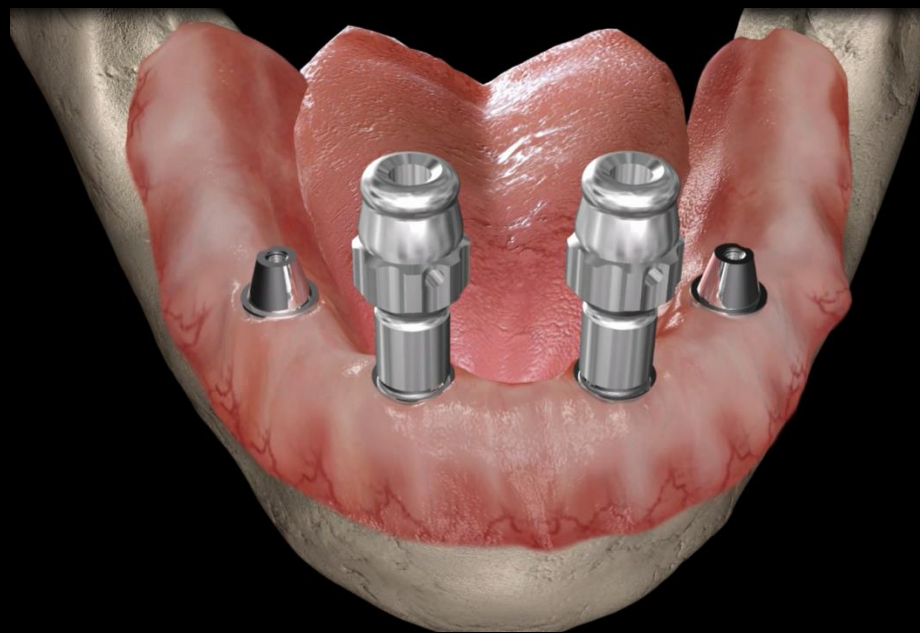
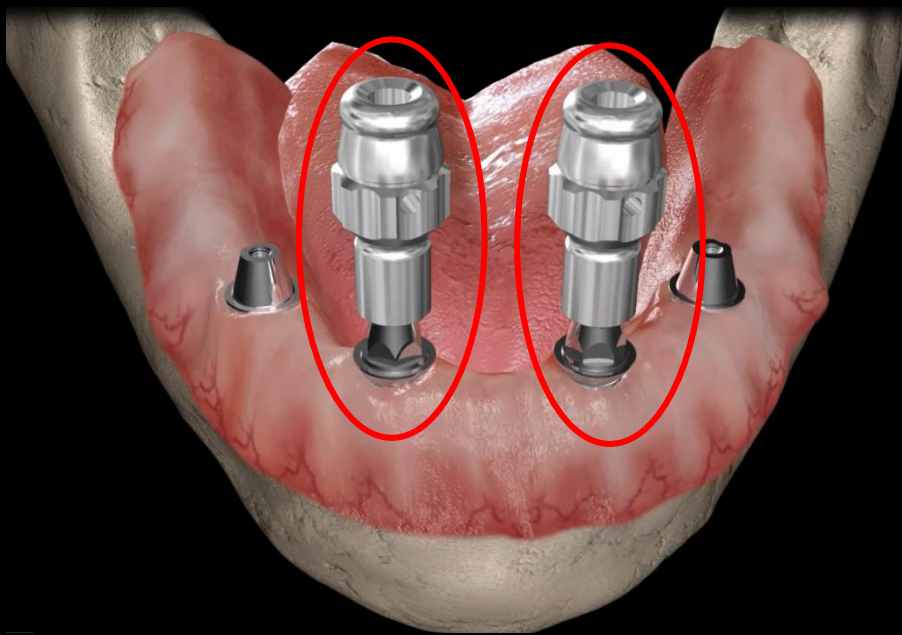
Protetska rehabilitacija



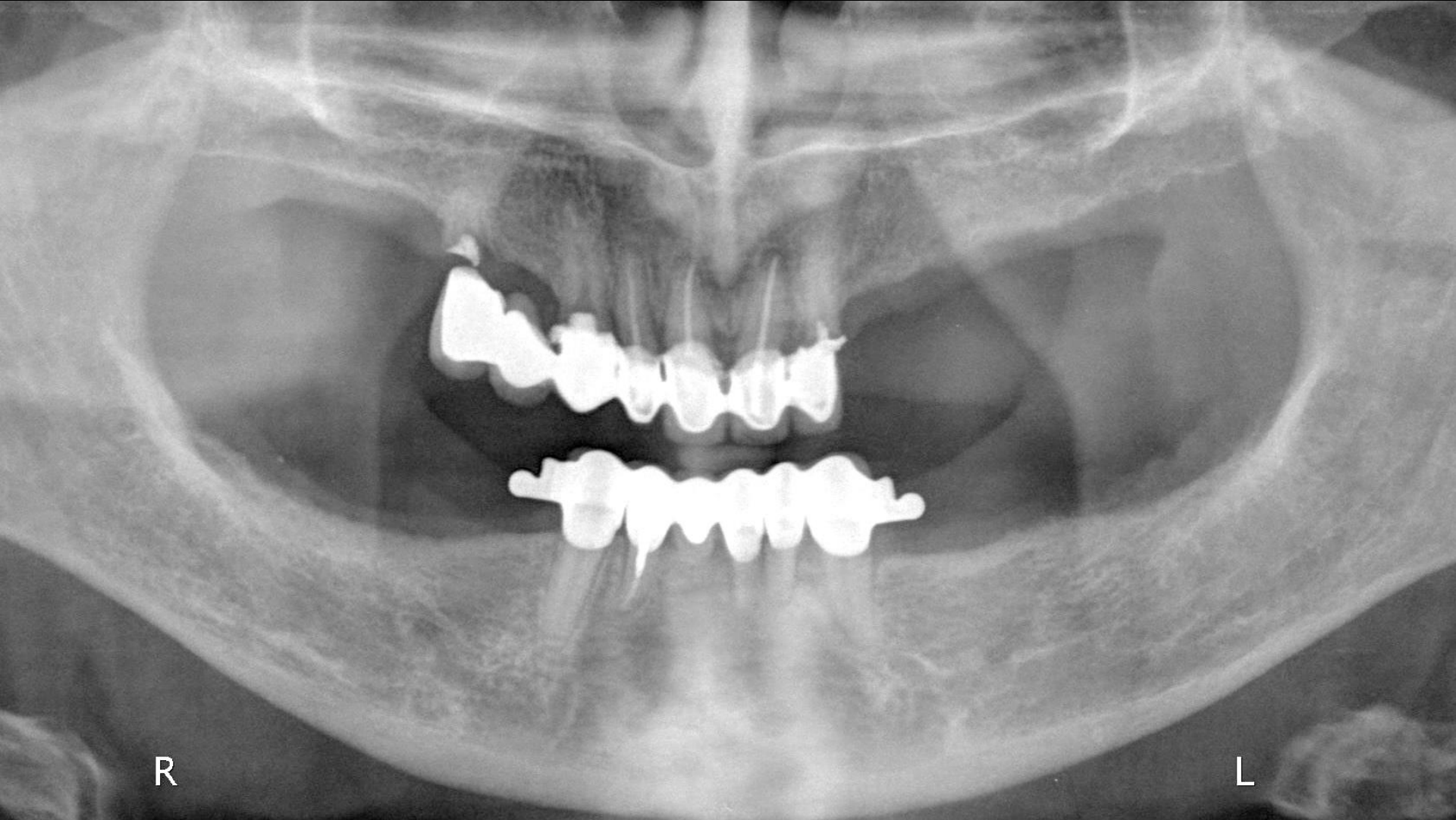


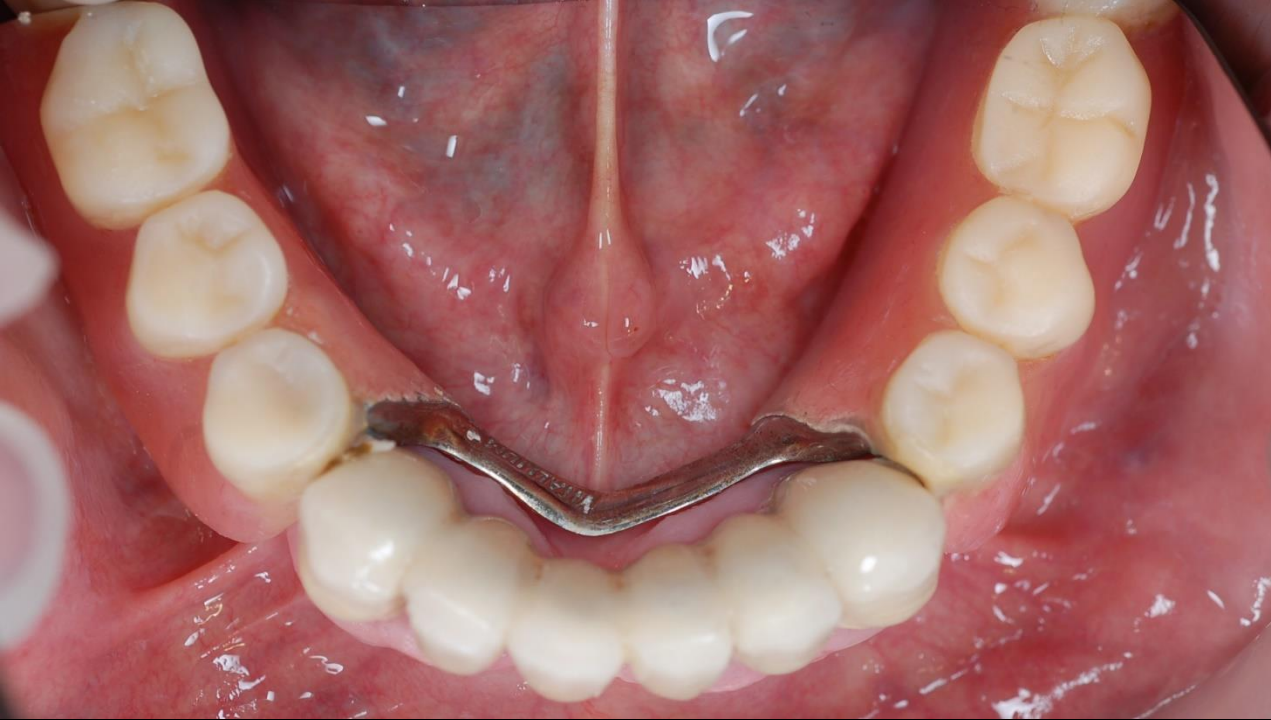


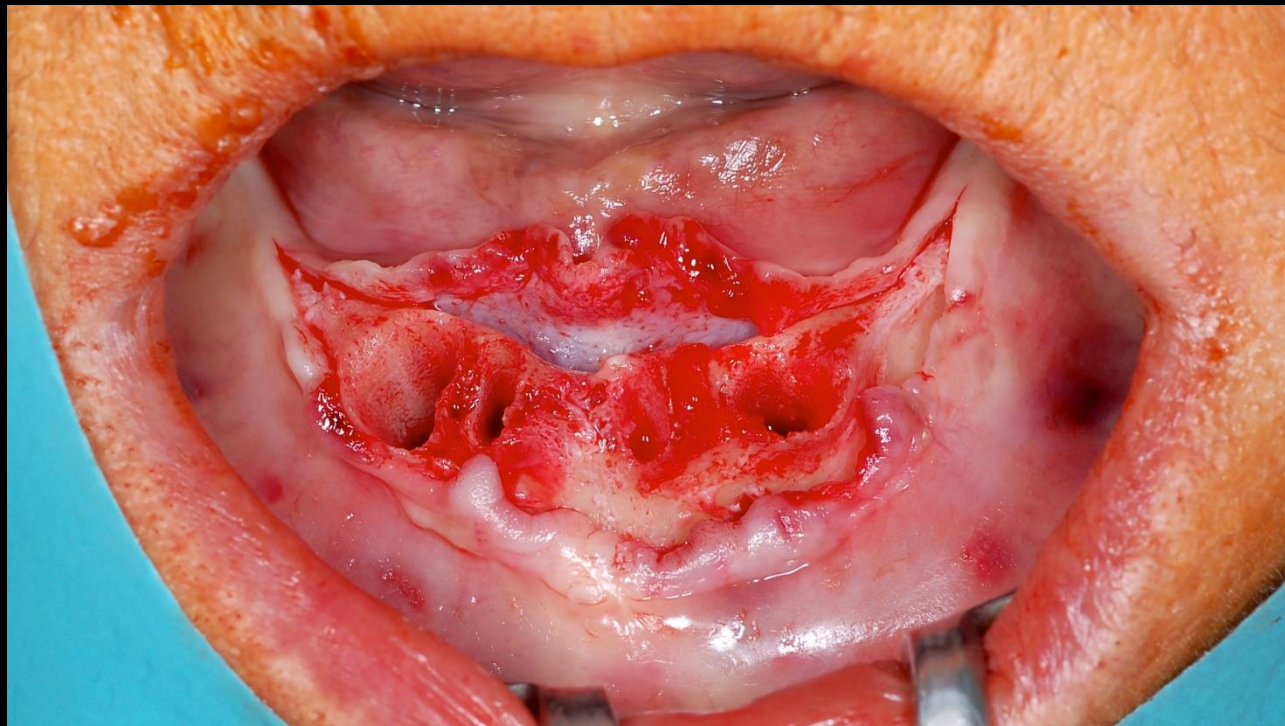


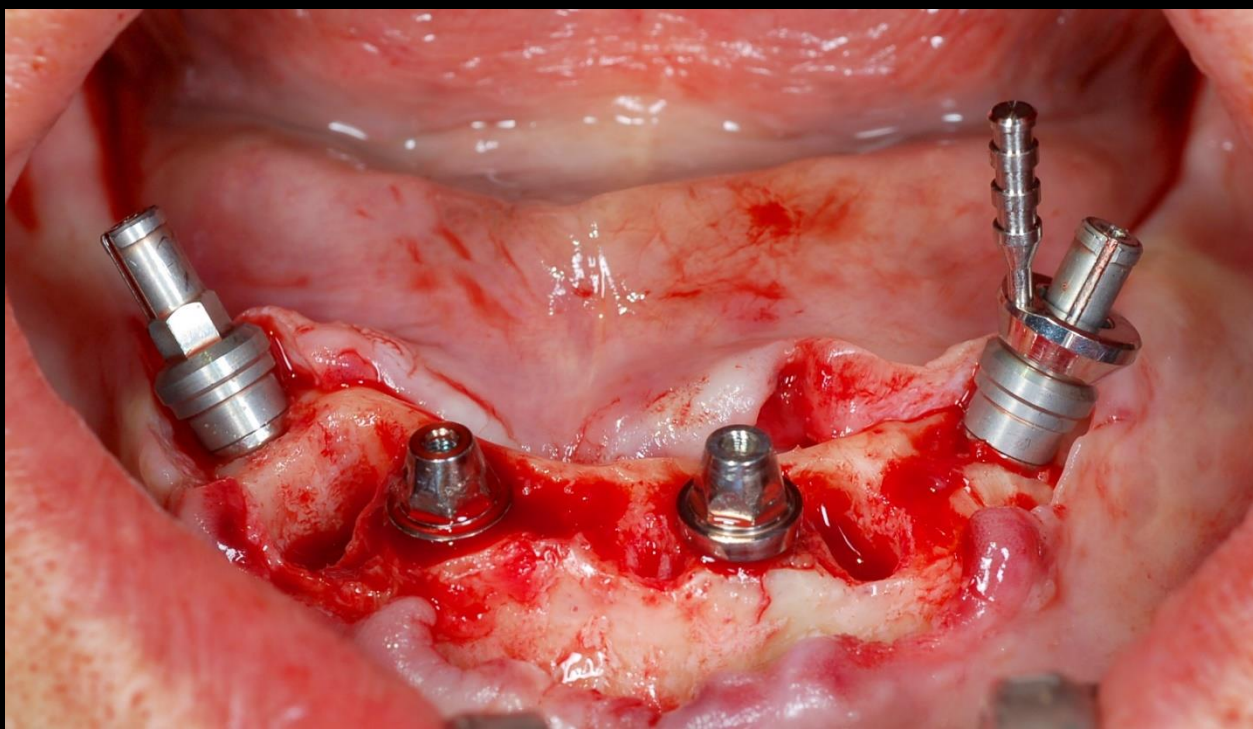
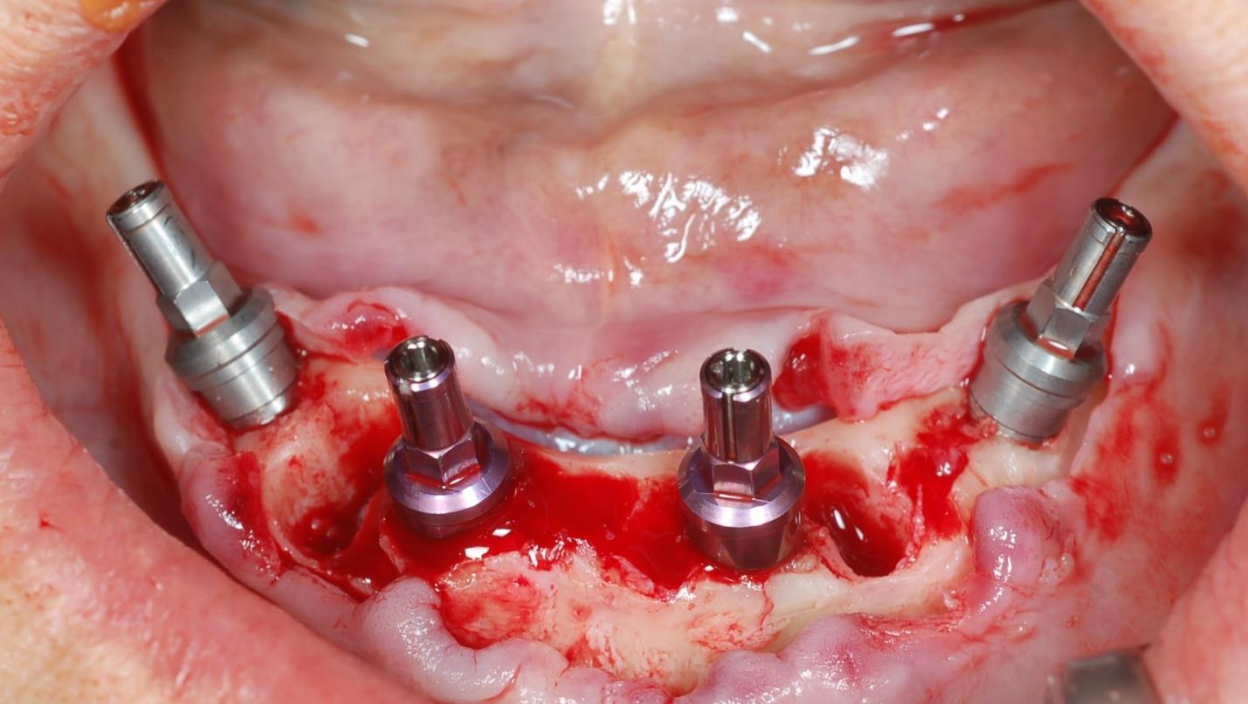


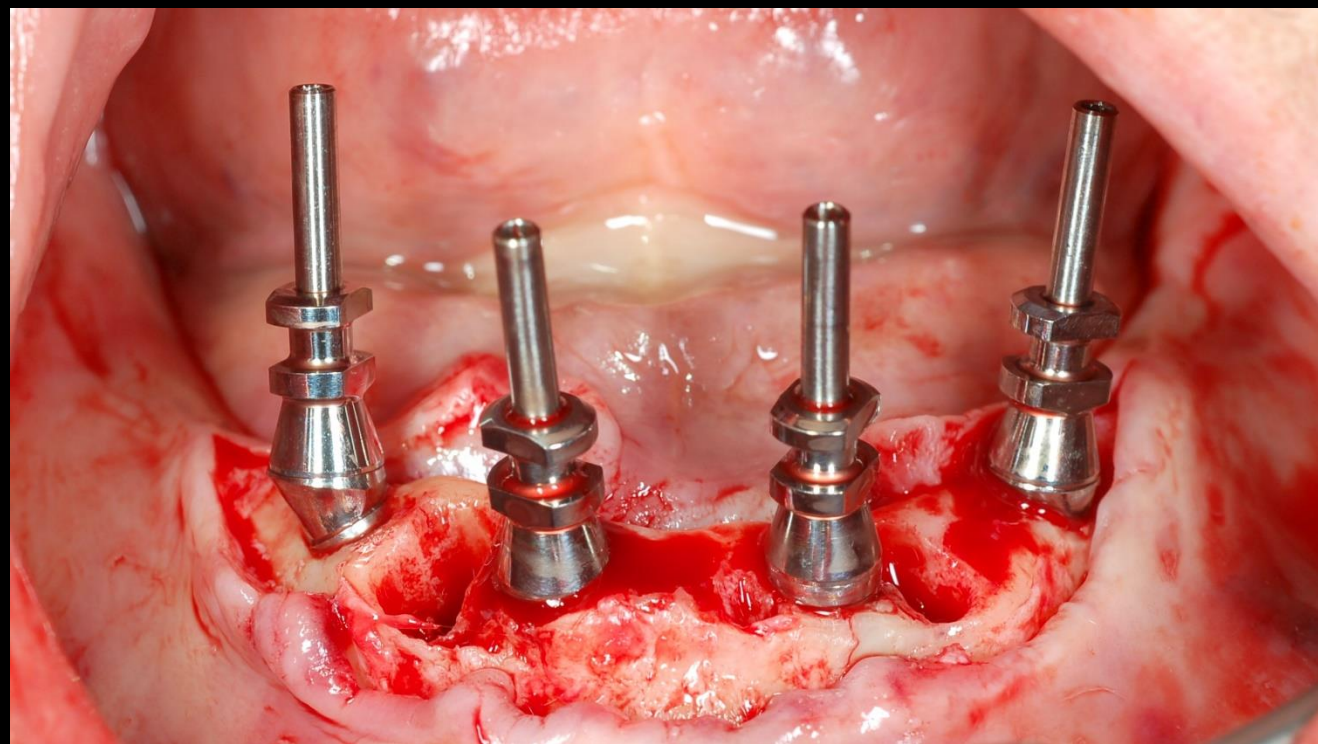
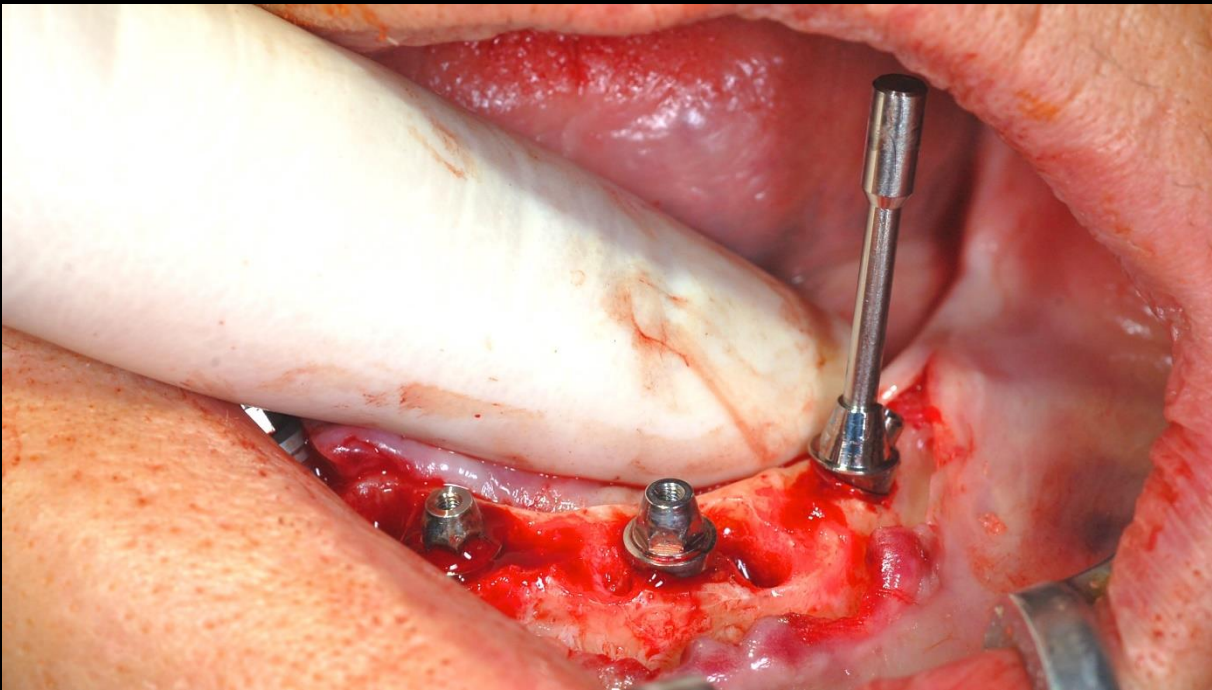
Prikaz rada na pacijentu

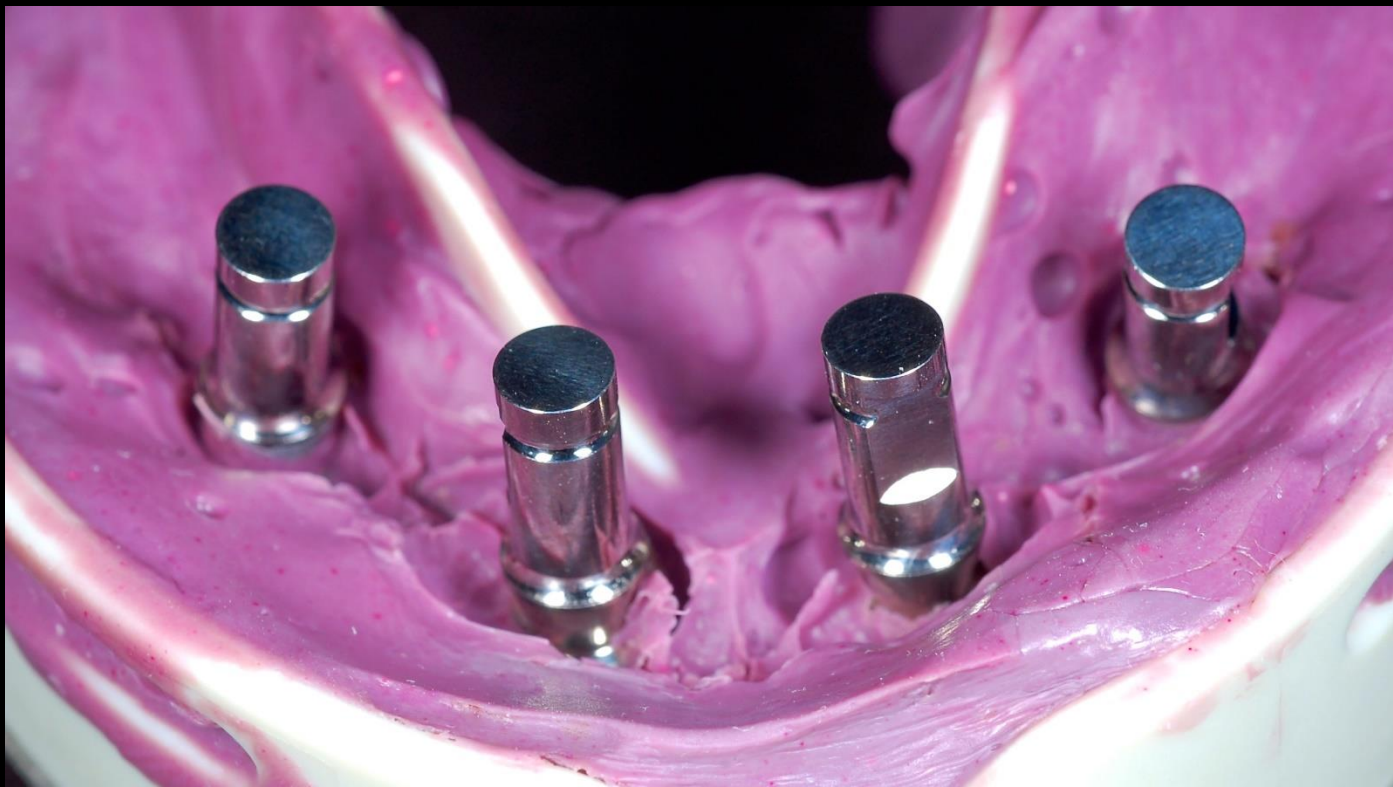
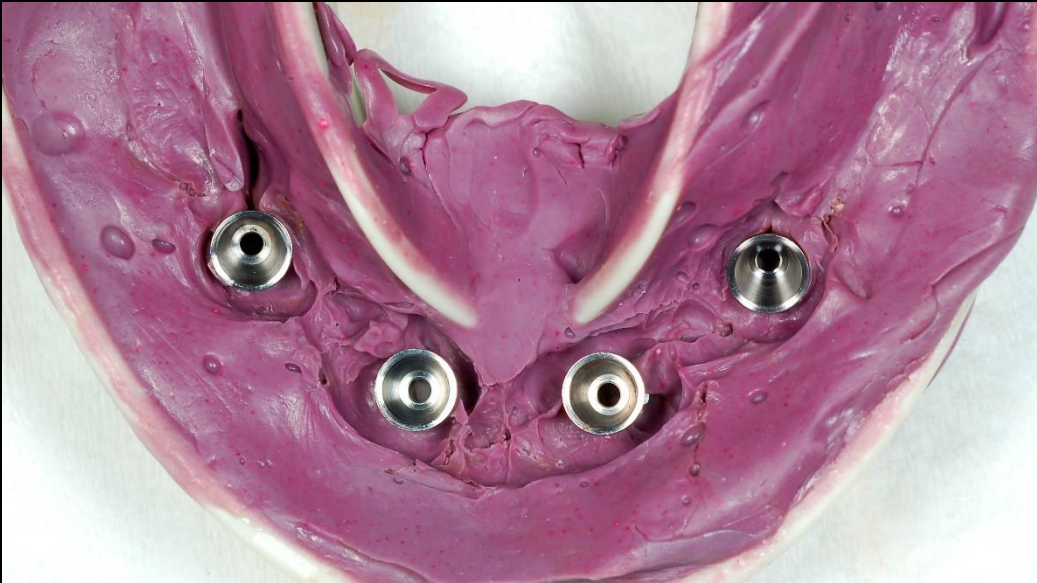


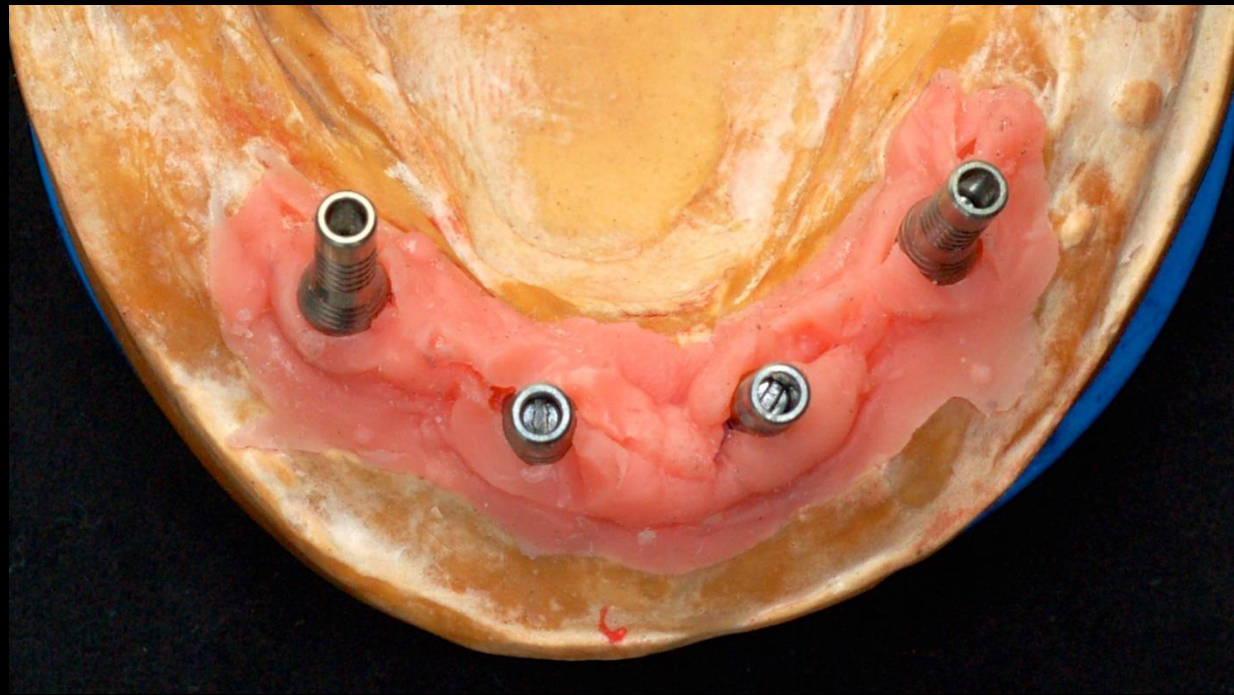


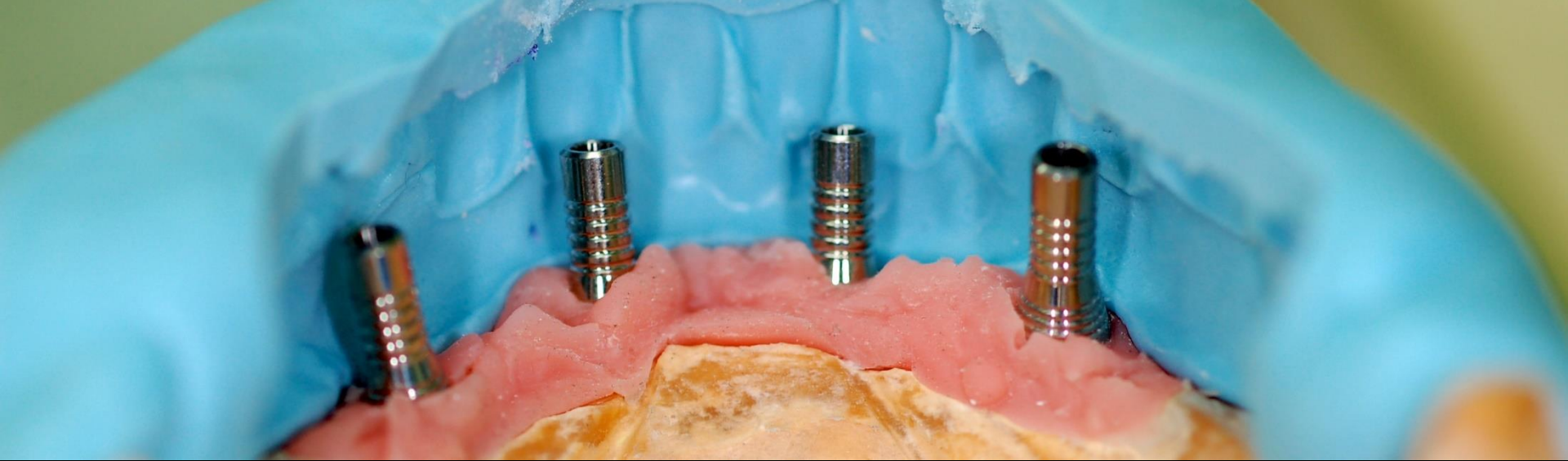


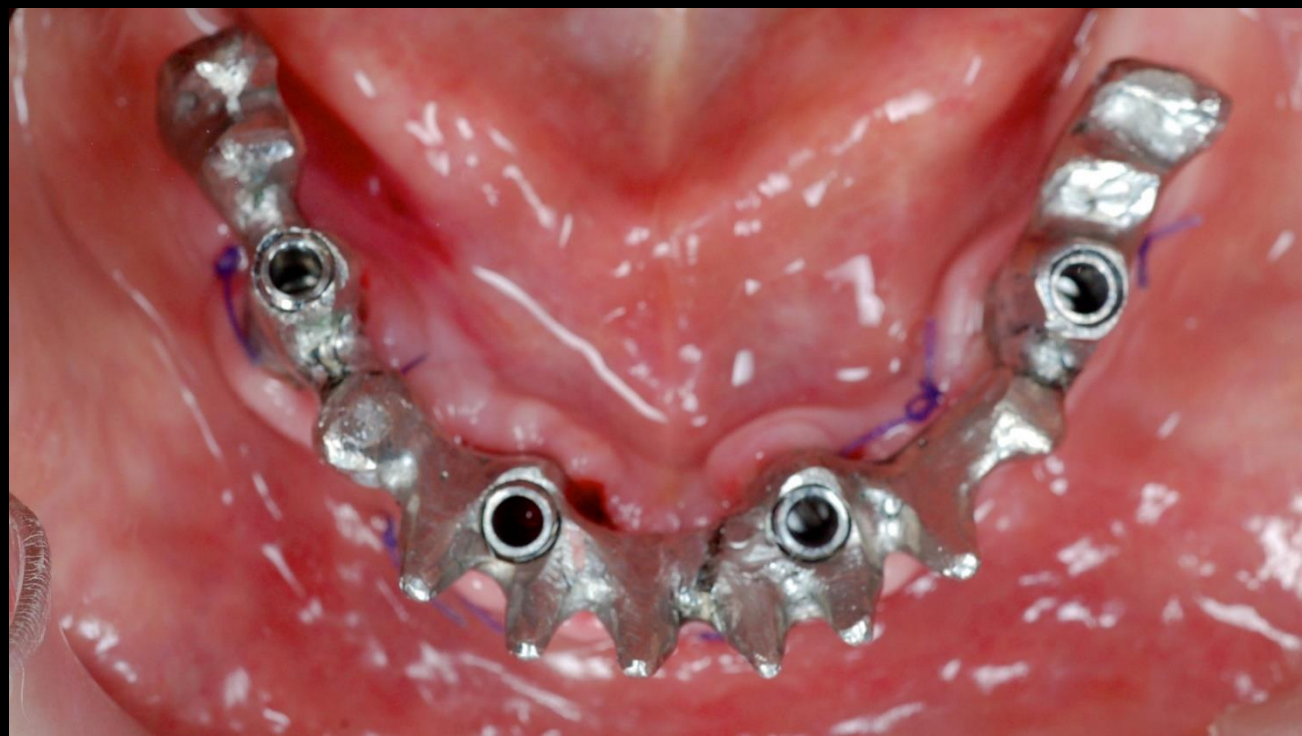
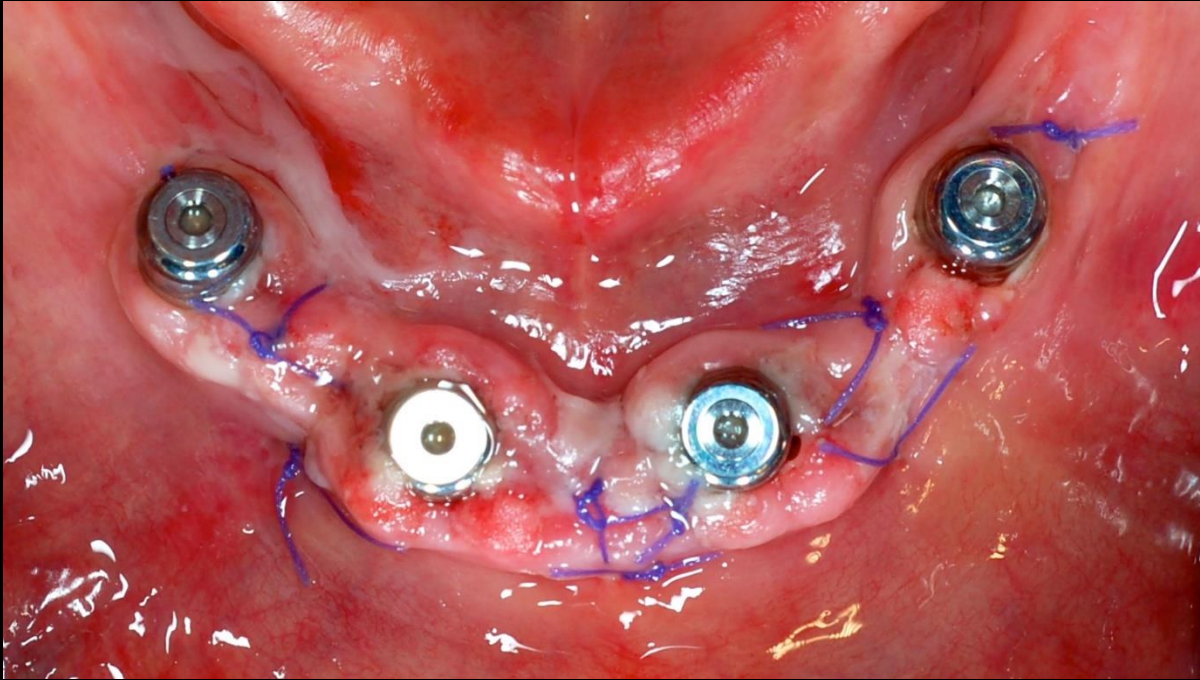




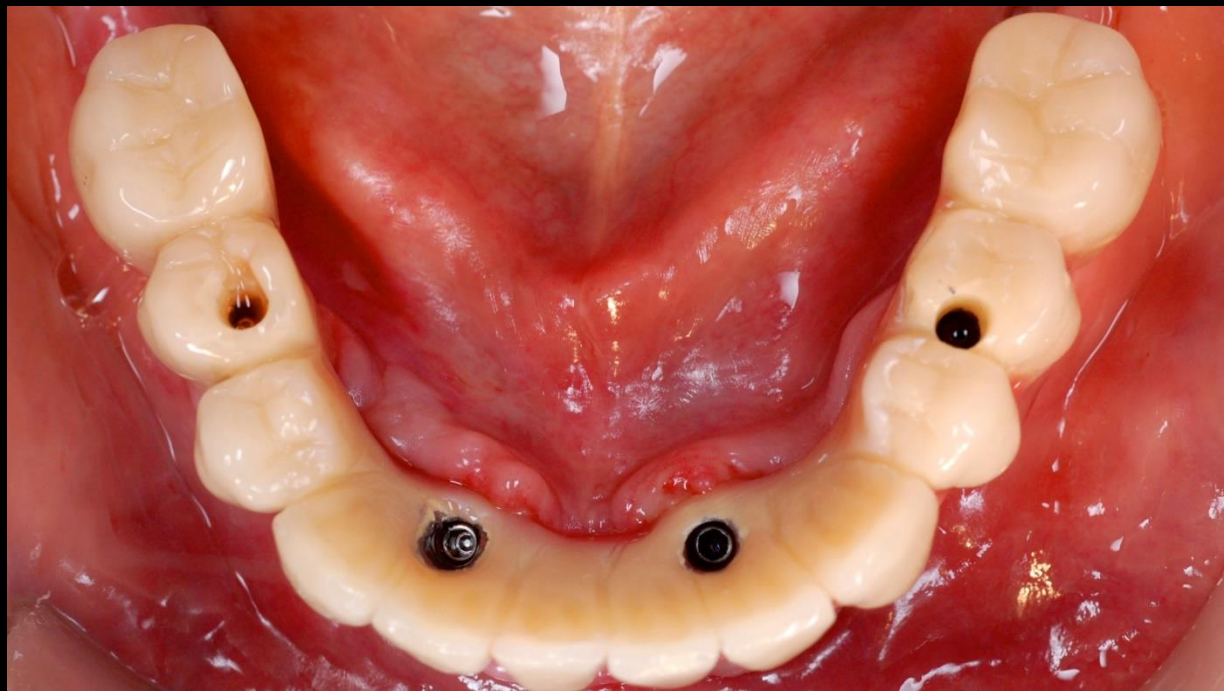


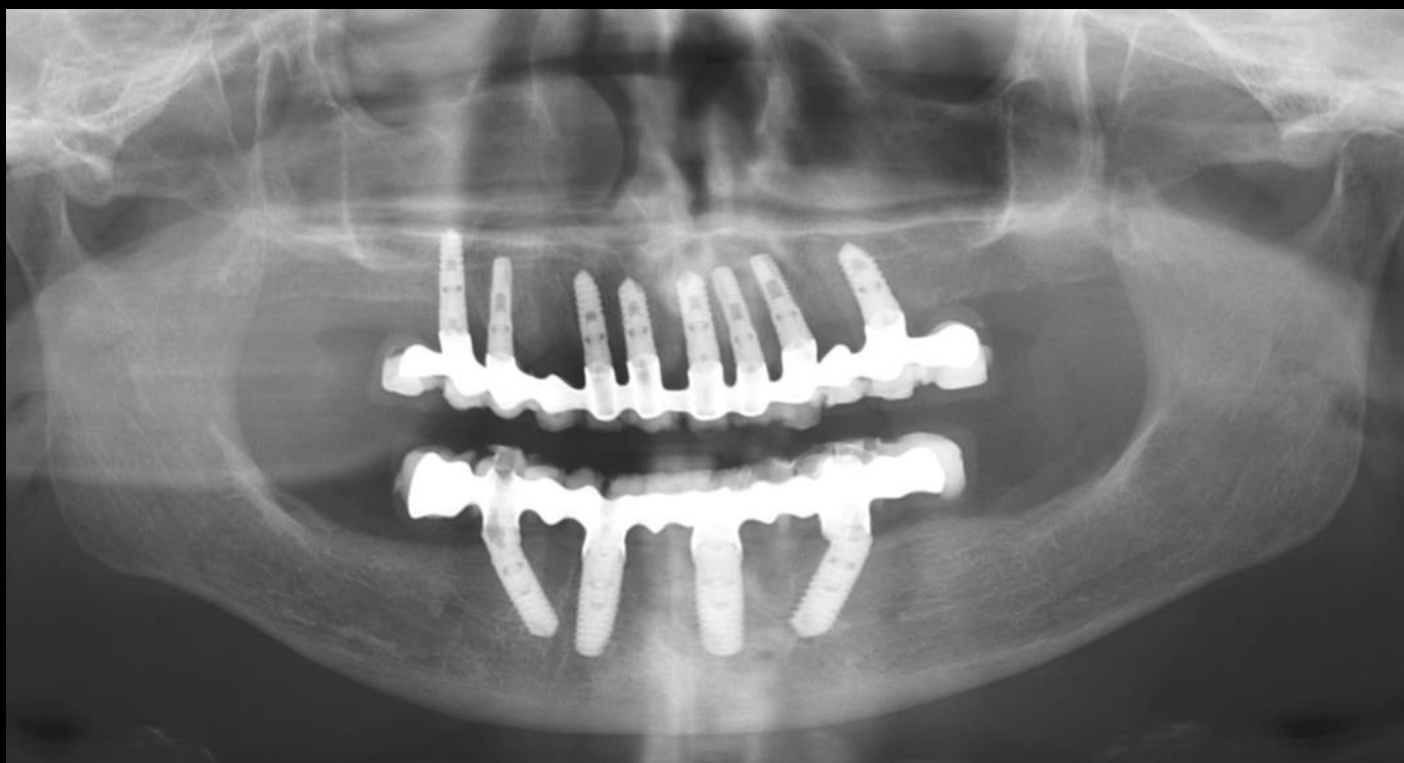


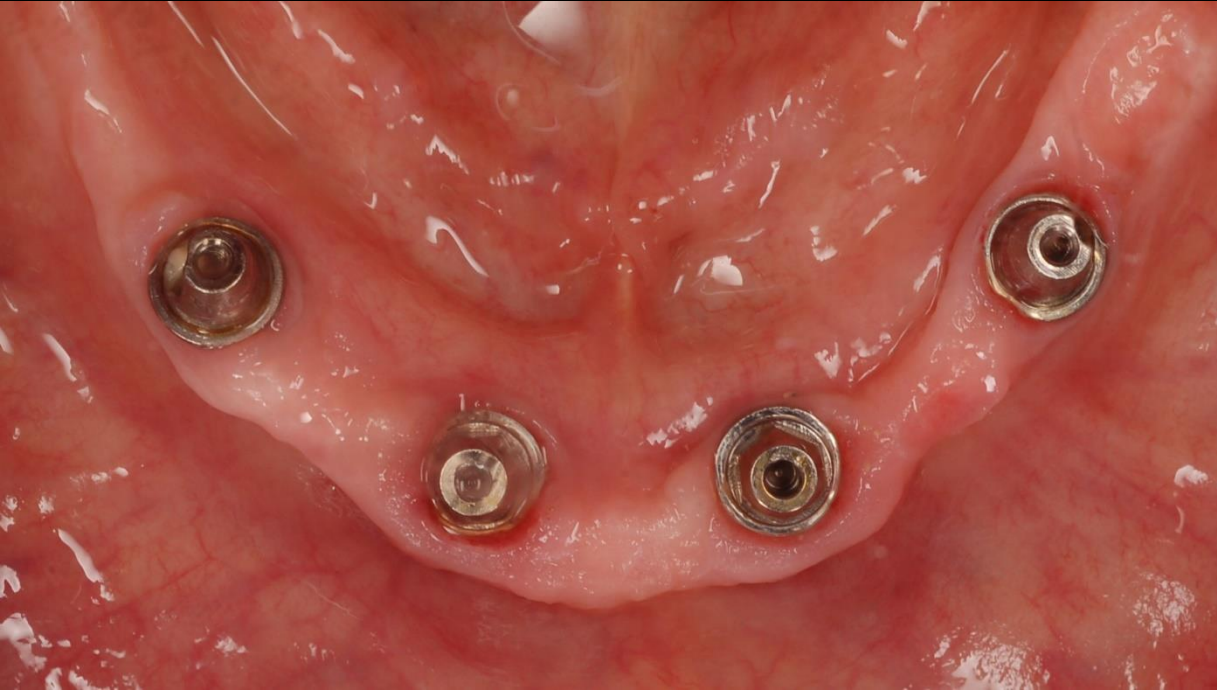












4 mjeseca kasnije













Svibanj 2013



Lipanj 2016