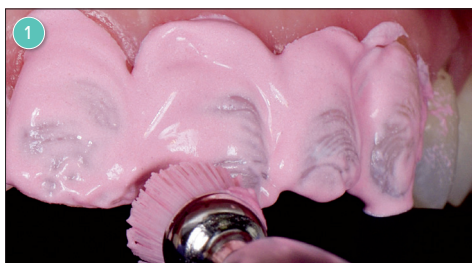


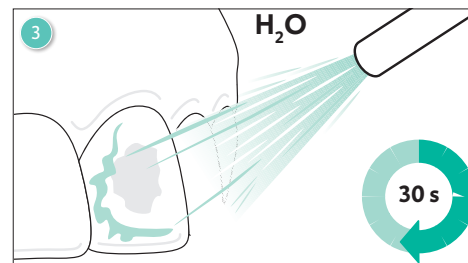
Icon smooth surface – step by step



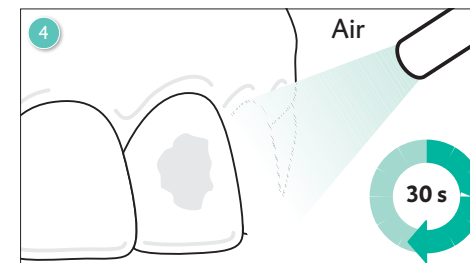
1 Clean teeth. Apply rubber dam or liquid dam.



2 Etch for 2 min with Icon-Etch.



3 Rinse off with water for 30 s.



4 Dry with oil-free and water-free air for 30 s.



5 **Inspection:** Apply Icon-Dry, white spot should diminish significantly.



6 If spot is still visible, repeat etching-step. Etch up to 3 x 2 min.



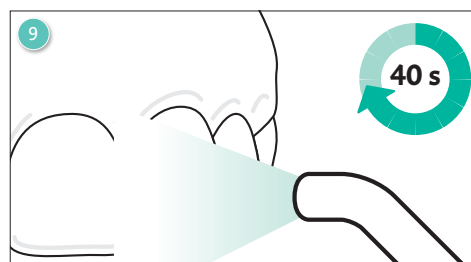
7 Apply Icon-Dry, let set for 30 s. Dry thoroughly with oil-free and water-free air.



8 Switch off operating light.



9 Infiltrate for 3 min with Icon-Infiltrant.



10 Remove excess with cotton roll. Light-cure for 40 s.



11 **Repeat:** Infiltration for 1 min. Remove excess, light-cure.



12 Remove rubber dam. Polish thoroughly.